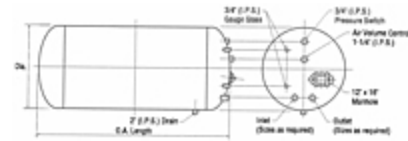


Midwest Tank Company
 17368 197th Avenue
 Big Lake, MN 55309 US
 Tel: 763.263.0747
 Fax: 763.263.0748
 Email: info@midwesttankco.com

Item # HP4854, Hydropneumatic Tanks

Midwest Tank Co. standard tapplings for pressure tanks used in hydropneumatic service. The standard interior lining for hydropneumatic tanks is a TNEMEC Series 20-2000 Pota-Pox with a 7 to 11 mil DFT. This is an NSF approved coating and is used throughout the industry for protection in cold water applications. This coating requires an SSPC-SP 10 near-white blast. All tank exteriors shall be primed. Alternate linings are available. All tanks are ASME labeled and are available in 100, 125, and 150 PSI design pressures.

Other sizes are available upon request. The diameter must be in 6-inch increments. The length of the shell may be manufactured to whatever length is necessary to achieve the desired capacity. Number of openings and sizes may be located on the drawing worksheet. There is no limit on quantity or size of openings. A standard manhole is 12 inches by 16 inches. Other manhole sizes are available



Specifications

Capacity	513 gal
Diameter	48 in
Overall Height	78 in
Design Pressure	100 psi 125 psi 150 psi