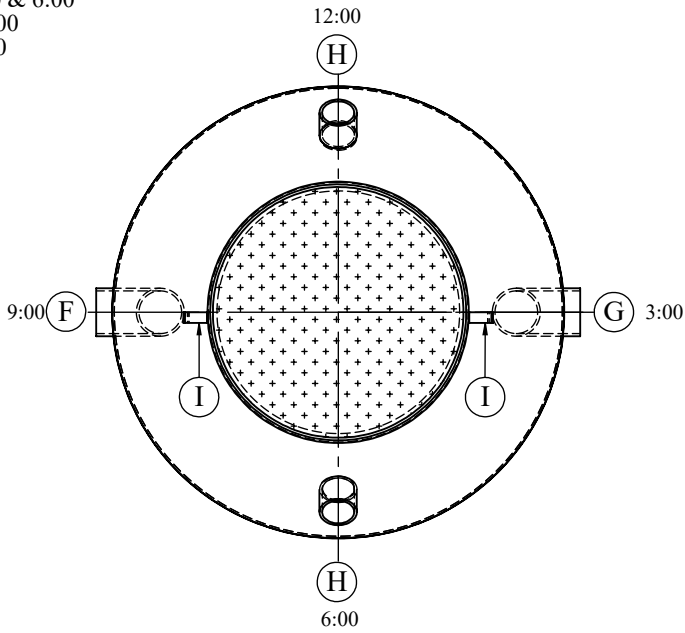
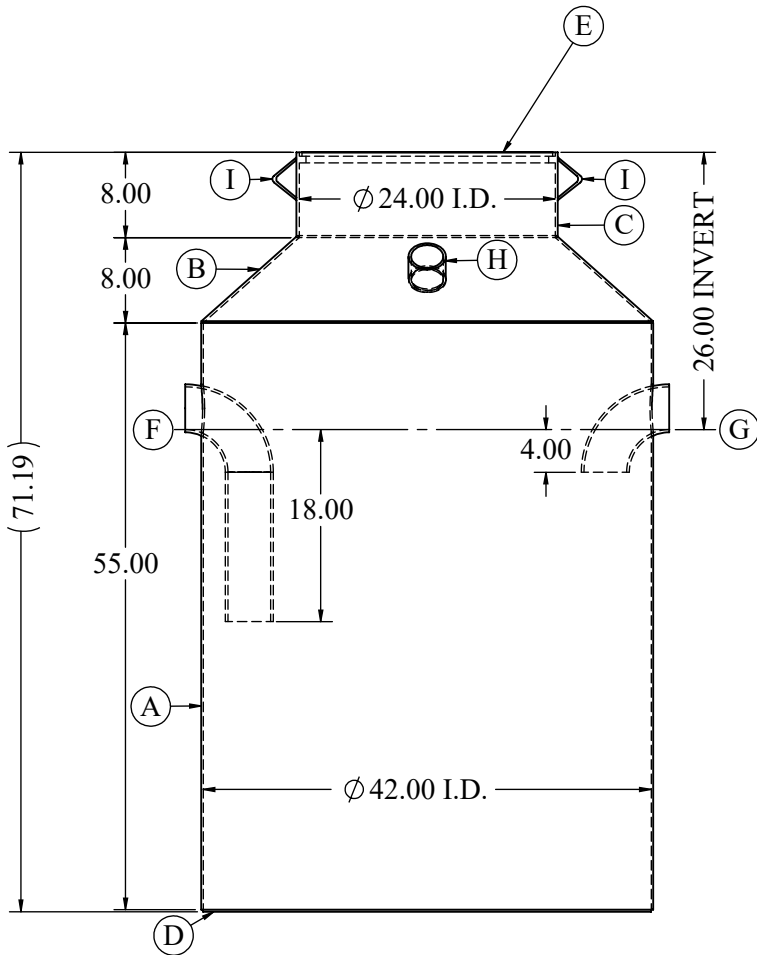


ORIENTATION  
 VENT: 12:00 & 6:00  
 OUTLET: 9:00  
 INLET: 3:00



ITEM	QTY.	DESCRIPTION	MATERIAL
A	1	42" I.D. x 55" x 3/16" - SHELL	A36
B	1	42" I.D. x 24" I.D. x 1/4" - CONE	A36
C	1	24" I.D. x 8" x 1/4" NECK	A36
D	1	42" O.D. x 3/16" - BOTTOM	A36
E	1	3/8" FLOOR PLATE - COVER	A36
F	1	4"-SCH.40 90° ELBOW - OUTLET	A234
G	1	4"-SCH.40 90° ELBOW - INLET	A234
H	2	3-SCH.40 PIPE - VENT	A53B/E
I	2	LIFTING LUG	A36



NOTES:

- 35 CUBIC FT CAPACITY
- SHOP TESTED WITH 3 PSI (TEST CERTIFICATE SUPPLIED UPON REQUEST).
- THIS OIL AND FLAMMABLE LIQUID INTERCEPTOR MEETS THE MINNESOTA STATE PLUMBING CODE FOR A NON-RATED INTERCEPTOR PER SECTION 1017.1 & 1017.2. LOCAL AUTHORITY HAS JURISDICTION.
- LOCAL AUTHORITY HAS JURISDICTION. (A WELDER OPERATOR QUALIFICATION TEST RECORD PER QW484 PROVIDED UPON REQUEST).
- PROTECTIVE COATING APPLIED INSIDE & OUT.
- APPROX. WT. 750#.

DRAWING TITLE:  
 INFLAMMABLE  
 WASTE TRAP  
 26" INVERT

CUSTOMER:  
 PROJECT:  
 DWG.No. A1006 / PROJECT No.

REV.	DATE	DESCRIPTION

DRAWING BY:  
 MIKE  
 DATE: 6/16/17