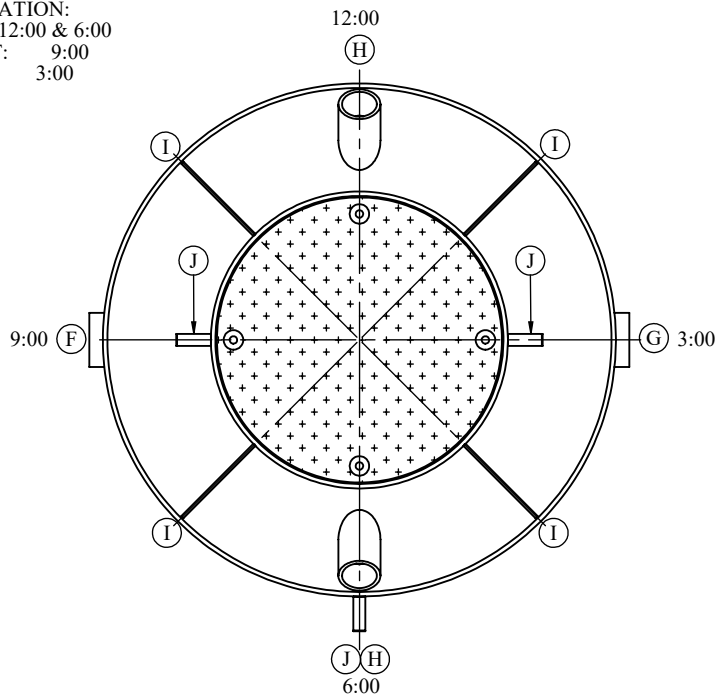
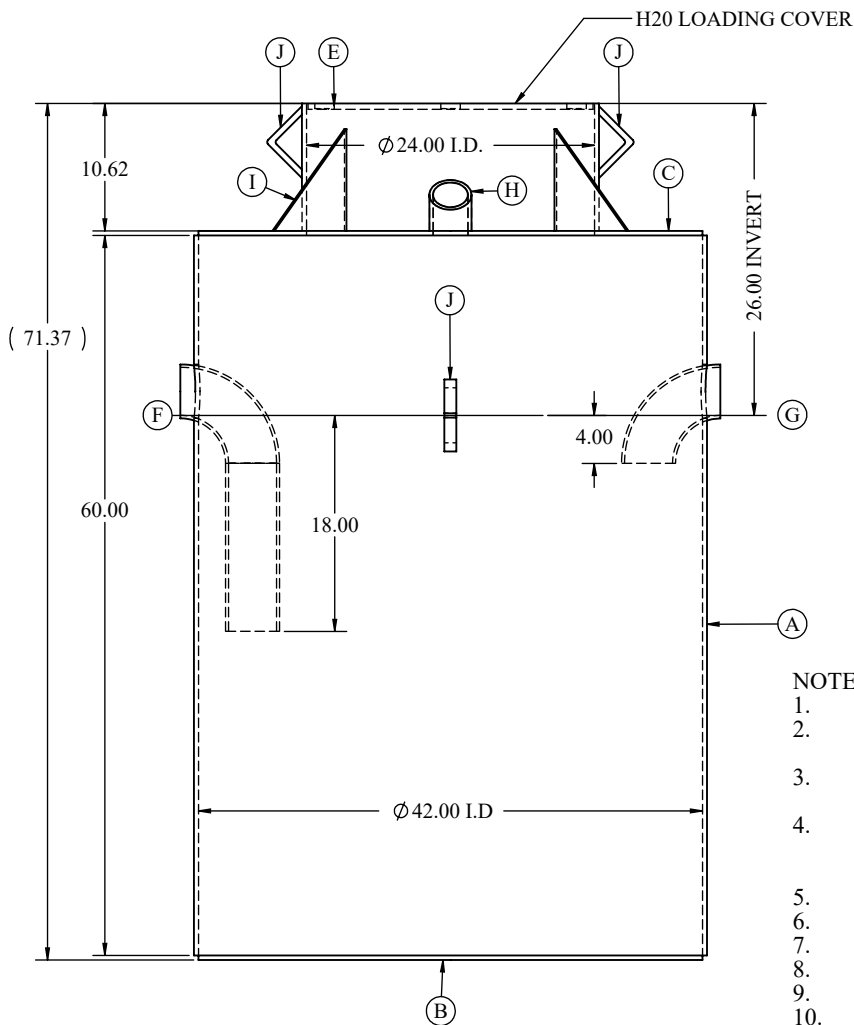


ORIENTATION:
 INLET: 12:00 & 6:00
 OUTLET: 9:00
 VENT: 3:00



ITEM	QTY.	DESCRIPTION	MATERIAL
A	1	42" I.D. x 60" x 3/8" - SHELL	A36
B	1	42" O.D. x 3/8" - BOTTOM	A36
C	1	42" O.D. x 24" I.D. x 3/8" - TOP	A36
D	1	24" I.D. x 10-5/8" x 3/8" - NECK	A36
E	1	1/2" FLOOR PLATE COVER w/ 4-BOLTS (SS) COUNTERBORE	A36
F	1	4"-SCH.40 90° ELBOW - OUTLET	A234
G	1	4" SCH.40 90° ELBOW - INLET	A234
H	2	3" SCH.40 PIPE - VENT	A53E/B
I	4	8-1/2" x 8-1/2" x 3/8" - GUSSETS	A36
J	3	LIFTING LUGS	A36



NOTES:

- 35 CUBIC FT. CAPACITY.
- SHOP TESTED w/ 3 P.S.I. TEST CERTIFICATE SUPPLIED UPON REQUEST.
- MEETS THE MINNESOTA STATE PLUMBING CODE FOR INFLAMMABLE WASTE TRAPS.
- WELDING PERFORMED BY A QUALIFIED WELDER. A WELDER OPERATOR QUALIFICATION TEST RECORD Per QW484 PROVIDED UPON REQUEST.
- SEAL WELDED INSIDE AND OUT.
- INTERIOR METAL PREP: SP-10.
- INTERIOR COATING: 16 MILS DFT COAL TAR EPOXY.
- EXTERIOR METAL PREP: SP-6
- EXTERIOR COATING: 16 MILS DFT COAL TAR EPOXY.
- APPROXIMATE WEIGHT. 1600#.

DRAWING TITLE: INFLAMMABLE WASTE TRAP A2000 DELUXE 26" INVERT	CUSTOMER: PROJECT: DWG.No. A2000 / PROJECT No.	REV.	DATE	DESCRIPTION	DRAWING BY: MIKE DATE: 7/31/12