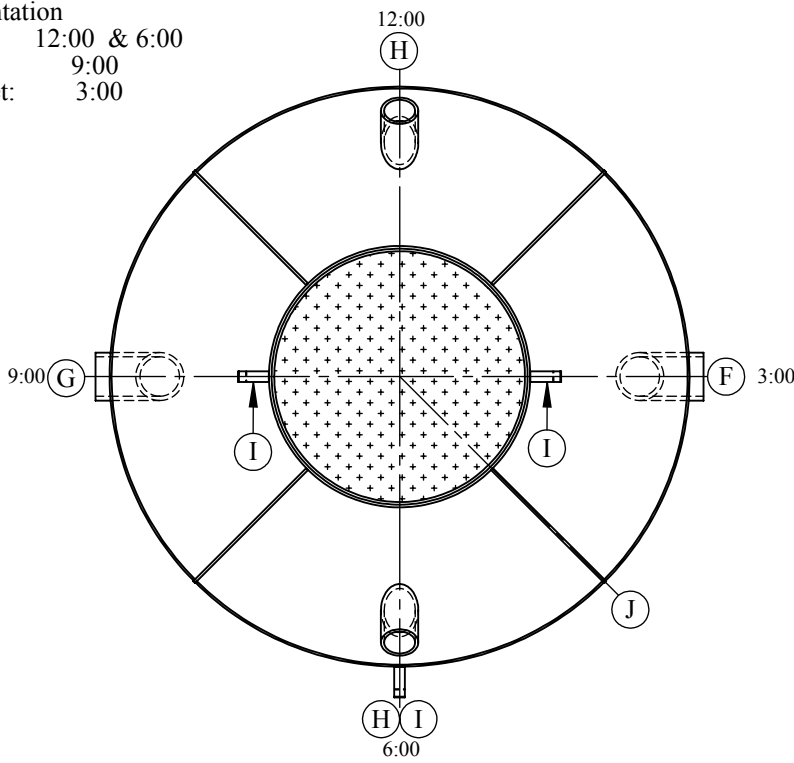
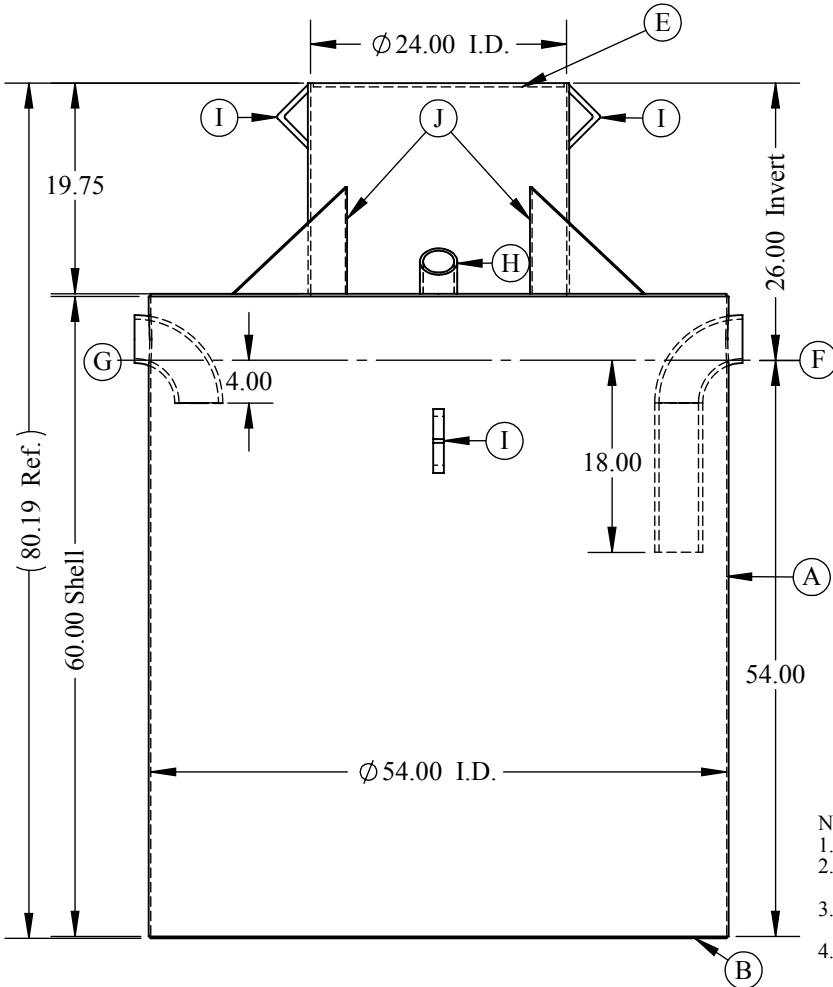


Orientation
 Vent: 12:00 & 6:00
 Inlet: 9:00
 Outlet: 3:00



| Item | Qty. | Description | Material |
|------|------|----------------------------------|----------|
| A | 1 | 54" I.D. x 60" x 3/16" (Shell) | A36 |
| B | 1 | 54" O.D. x 3/16" (Bottom) | A36 |
| C | 1 | 54" I.D. x 24" I.D. x 1/4" Plate | A36 |
| D | 1 | 24" I.D. x 19-3/4" x 1/4" (Neck) | A36 |
| E | 1 | 3/8" Floor Plate Cover | A36 |
| F | 1 | 4" Sch.40 90° Elbow (Outlet) | A234 |
| G | 1 | 4" Sch.40 90° Elbow (Inlet) | A234 |
| H | 2 | 3" Sch.40 Pipe (Vent) | A53E/B |
| I | 3 | Lifting Lug | A36 |
| J | 4 | 15" x 15" x 1/4" (Gusset) | A36 |



NOTES:

- 70 CUBIC FT CAPACITY
- SHOP TESTED WITH 3 PSI (TEST CERTIFICATE SUPPLIED UPON REQUEST).
- MEETS THE MINNESOTA STATE PLUMBING CODE FOR INFLAMMABLE WASTE TRAPS.
- WELDING PERFORMED BY A QUALIFIED WELDER. (A WELDER OPERATOR QUALIFICATION TEST RECORD PER QW484 PROVIDED UPON REQUEST).
- PROTECTIVE COATING APPLIED INSIDE & OUT.
- APPROX. WT. 1,000#.

Drawing Title
 70 Cu.Ft.
 Inflammable Waste Trap

CUSTOMER:
 PROJECT:
 DWG.No. A4440 / PROJECT No.

| Rev. | Date | Description |
|------|------|-------------|
| | | |
| | | |
| | | |

Drawn By:
 Mike
 Date: 11/26/12