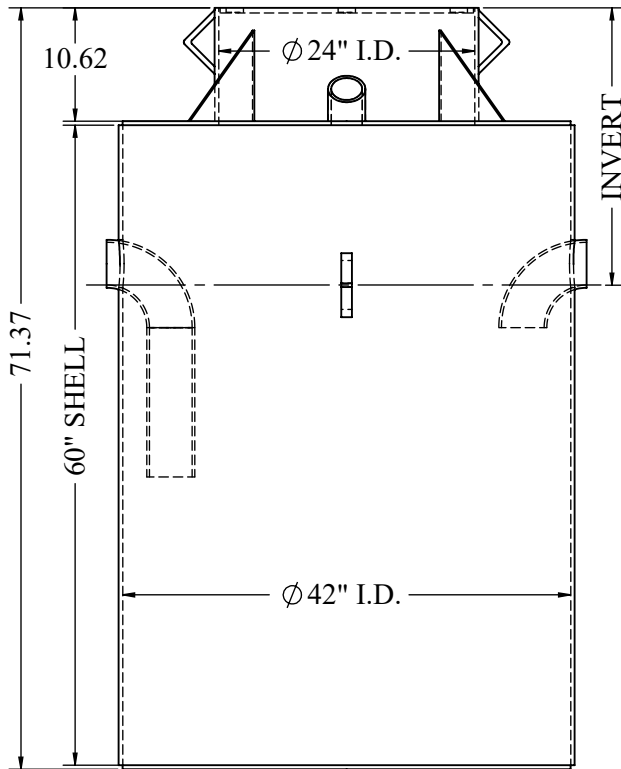
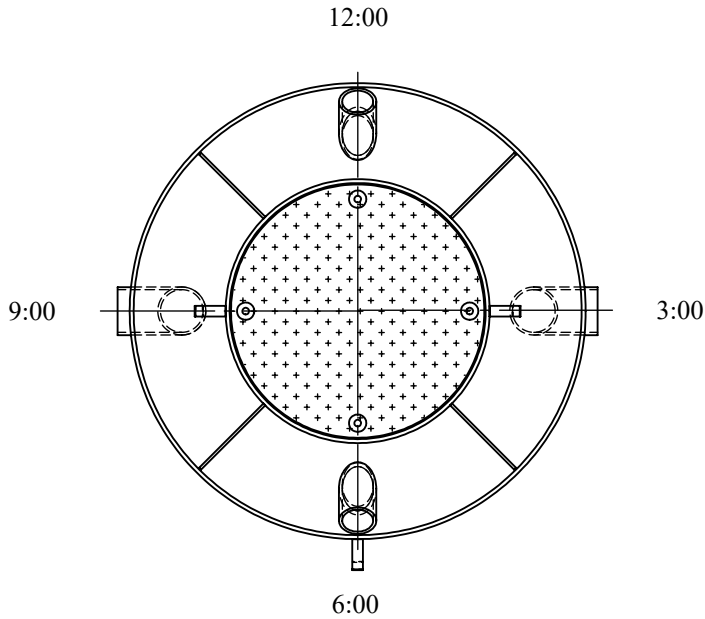


WT-2000

# 35 CUBIC FOOT



INVERT ELEVATION (STANDARD IS 26") <input type="checkbox"/>		CUSTOM ELEVATION <input type="text"/>		
ORIENTATION	VENT	INLET	OUTLET	
12:00				
1:30				
3:00				
4:30				
6:00				
7:30				
9:00				
10:30				
OPENING SIZES	VENT	INLET	OUTLET	
3"				
4" (STD)				
6"				
8"				
<b>ANTIFLOTATION ANCHOR RING</b>				
<b>COUNTER SUNK BOLTED COVER (1/2")</b>				
<b>TANK LINING</b>				
COAL TAR EPOXY 16 MILS IN & OUT				

NOTES:

1. SHOP TESTED WITH 3 PSI (TEST CERTIFICATE SUPPLIED UPON REQUEST).
2. THIS OIL AND FLAMMABLE LIQUID INTERCEPTOR MEETS THE MINNESOTA STATE PLUMBING CODE FOR A NON-RATED INTERCEPTOR PER SECTION 1017.1 & 1017.2.
3. LOCAL AUTHORITY HAS JURISDICTION.
4. WELDING PERFORMED BY A QUALIFIED WELDER. (A WELDER OPERATOR QUALIFICATION TEST RECORD PER QW484 PROVIDED UPON REQUEST).
5. SEAL WELDED INSIDE & OUT.
6. INTERIOR METAL PREP: SP-10.
7. INTERIOR COATING: 16 MILS DFT COAL TAR EPOXY.
8. EXTERIOR METAL PREP: SP-6.
9. EXTERIOR COATING: 16 MILS DFT COAL TAR EPOXY.
10. APPROX. WT. 1600#.

DRAWING TITLE: A2000 INFLAMMABLE WASTE TRAP	CUSTOMER: PROJECT: DWG.No. WT-2000 / PROJECT No.
--	--